

# SCHEDULE OF MEMBERSHIP FEES FOR THE DGNB (GERMAN SUSTAINABLE BUILDING COUNCIL)

(as of June 01, 2010)

## Part 1: Ordinary membership

Categories*	annual membership fee in € (net)
<b>A) Consulting and planning agencies</b>	
A1: up to five employees .....	500
A2: 5 to 20 employees .....	1,000
A3: 20 to 100 employees .....	2,000
A4: more than 100 employees .....	5,000
<b>B) Private firms (whose business does not fall within category A)</b>	
B1: up to € 500,000 in revenue** .....	500
B2: € 500,000 to 10 million in revenue** .....	1,000
B3: € 10 to 100 million in revenue** .....	2,000
B4: more than € 100 million in revenue** .....	5,000
** Revenue is defined in accordance with Section 275 para 2 of the German Commercial Code as sales revenue from the previous year	
<b>C) Public sector and non-governmental organizations</b>	
C1: Cities and communities < 20,000 inhabitants .....	800
C2: Cities and communities > 20,000 inhabitants .....	1,200
C3: Cities and communities > 100,000 inhabitants .....	2,000
C4: Other non-governmental organizations and non-profits .....	2,000
<b>D) Universities</b>	
D1: Universities .....	2,000
D2: Professorships / institutes .....	1,000
<b>E) Associations</b>	
E1: Associations .....	1,000

\* Please see the notes to this schedule of membership fees

## Part 2: Other membership

Categories*	annual membership fee in € (net)
<b>F) Partial membership</b>	
F1: Students, retirees, unemployed .....	60
F2: Private individuals .....	350
<b>G) Sustaining member</b>	
G1: Non-profits and associations .....	1,000
<b>H) Group membership</b>	
H1: Umbrella organization (ordinary member) .....	100 percent membership fee as listed in Part 1 of this schedule
H2: Suborganization(s) .....	50 percent membership fee as listed in Part 1 of this schedule
<b>I) Metropolitan area (one representative organization plus at least five sub-organizations)</b>	
I1: Representative organization (ordinary member) .....	1,000
I2: Suborganization (at least five) .....	50 percent membership fee as listed in Part 1, C1-C3 of this schedule

\* Please see the notes to this schedule of membership fees

# NOTES ON MEMBERSHIP FEES FOR THE DGNB (GERMAN SUSTAINABLE BUILDING COUNCIL)

## General notes

- In the interest of the DGNB's well-being, every applicant and every member is obligated to provide our head office with accurate information for a determination of the proper membership fee. If this information is not provided, our head office reserves the right to assign the member to the highest fee category.
- Legal personalities must appoint a representative with proper authority to exercise member rights.
- Each member must appoint a contact person who can exercise member rights.
- All of the fees are given excluding value added tax.

## Notes on Part 1: Ordinary members

### Definition of ordinary members

Any natural adult, corporation, institution, research center, company, or legal personality involved in construction can become an ordinary DGNB member.

Membership applies to the entire organization, not individual parts, departments, or locations.

Natural persons are, in particular, freelancers and those who do not pursue a commercial or professional interest.

The DGNB cannot tell without further ado whether a natural person wants to become a member for personal or professional reasons, so an indication is required with the application. If membership is not exclusively personal, the membership fee shall be determined based on the future member's employer/firm.

### Definition of category A) consulting and planning agencies

This category includes architects, consultants, designers, real estate agents, engineers, interior designers, landscape architects, project developers, lawyers, corporate consultants, etc.

### Definition of category B) Private firms

This category includes all private firms whose business does not fit into category A; examples are banks, construction product manufacturers, construction material manufacturers, construction firms, financiers, tradespeople, retail firms, hotels, real estate firms, cleaning and recycling companies, insurance firms, housing associations, publishers, etc.

### Rights of ordinary members

Ordinary members have voting rights for the member assembly and can participate in DGNB committees and task forces.

They have access to the members' area on the DGNB website, receive member information, and can use their DGNB membership for advertising purposes (use of DGNB logo – see DGNB press guidelines). In addition, they receive member discounts on DGNB products, such as certifications, training courses, manuals, software, events, etc.

Natural persons can, however, only purchase one product or a single ticket for events.

## Notes on Part 2: Other members

### F) Partial members

#### Definition of partial members

Any adult natural person with a special interest in construction not related to a commercial or professional purpose, such as full-time students, can become a partial member.

Students, retirees, and the unemployed must provide the DGNB with regular proof of their status. Partial members can only become members if they provide their private contact data without company data.

#### Rights of partial members

Partial members receive member information and can advertise their DGNB membership (use of logo – see DGNB press guidelines). They receive a membership discount on all available versions of manuals and software as well as discounts on event tickets. They can, however, only purchase one product or a single ticket for events.

Partial members from category F2 (private individuals) also receive a membership rebate for a certification project that is demonstrably private.

Partial members do not have any voting rights at the member assembly. They cannot dissipate in DGNB committees or task forces and do not have access to the members-only area of the DGNB website.

### G) Sustaining member

#### Definition of sustaining member

Sustaining the members of the DGNB are generally only non-profits and associations. They must appoint a representative with proper authority to exercise membership rights.

#### Rights of sustaining members

Sustaining members can participate in DGNB task forces. They have access to the members-only area on the DGNB website, receive member information, and can use their DGNB membership for advertising purposes (use of DGNB logo – see DGNB press guidelines).

Sustaining members have no voting right for the member assembly and cannot participate in DGNB committees. In addition, they receive member discounts on DGNB products, such as certifications, training courses, manuals, software, events, etc.

### H) Group member

#### Definition of group member

If a corporation consists of individual, legally independent subsidiaries below an umbrella organization, the suborganizations can apply for group membership if the umbrella organization is an ordinary member.

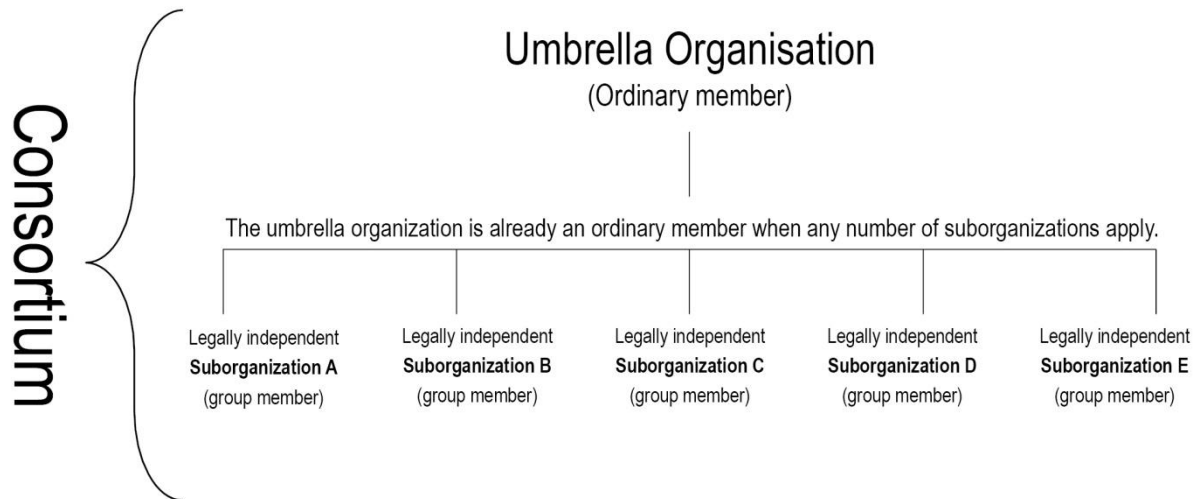
Chambers, associations, and the like are not recognized as umbrella organizations.

The umbrella organization must pay the full membership fee for its category. All suborganizations receive a 50 percent discount for their membership fee within their category.

Only the umbrella organization has a voting right. If the suborganizations desire a voting right, they must apply for ordinary membership.

The umbrella organization must give its written consent in the application for group membership.

Suborganizations of an umbrella organization do not automatically become DGNB members simply because the amount organization is a member or has applied for membership.



### Rights of group members

Group members can participate in DGNB committees and task forces. They have access to the members' area on the DGNB website, receive member information, and can use their DGNB membership for advertising purposes (use of DGNB logo – see DGNB press guidelines). In addition, they receive member discounts on DGNB products, such as certifications, training courses, manuals, software, events, etc.

Group members do not have any voting rights at the member assembly.

## I) Metropolitan area

### Definition of metropolitan area

A metropolitan area consists of at least five independent administrative units, such as cities and communities (suborganizations), and one representative organization appointed by the metropolitan area (public-law body or independent urban administrative unit).

### Application from metropolitan area

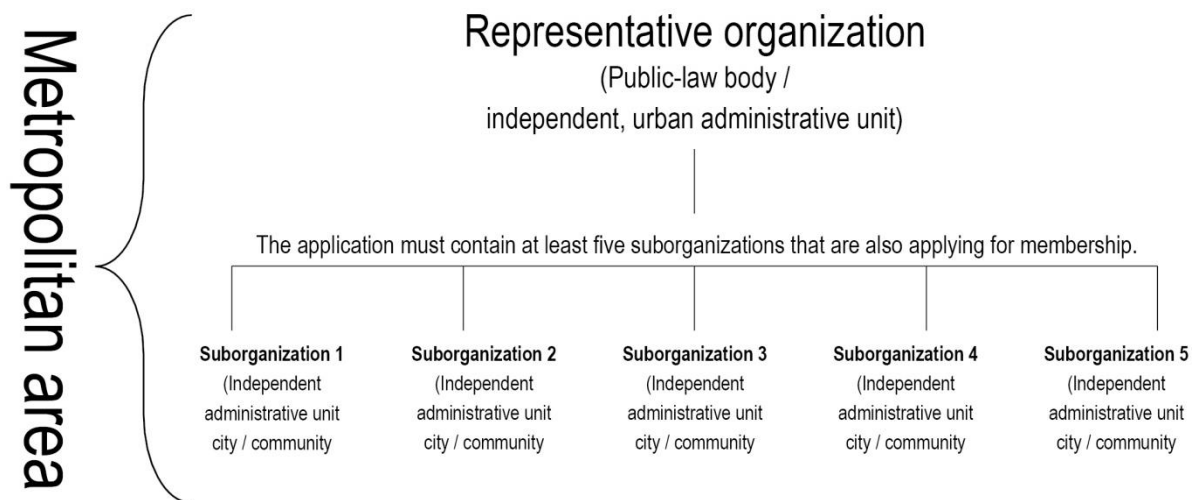
Only a representative organization can apply for membership on behalf of metropolitan area. For the application, the representative organization must specify at least five suborganizations that are also simultaneously applying for membership.

The representative organization will be considered an ordinary member. The suborganizations are assigned to categories C1, C2, and C3 (cities and communities) and receive a 50 percent discount on their membership fee.

Only the representative organization has a voting right. If the suborganizations desire a voting right, they must apply for ordinary membership.

The written consent of the organization representing the metropolitan area must be given if a suborganization applies for membership.

Furthermore, the organization representing the metropolitan area must declare which cities and communities are a member of the metropolitan area when the application is submitted. If the metropolitan area expands to cover additional cities and communities after becoming a member, these additions do not automatically become members without the consent of the DGNB management.



### Rights of suborganizations of metropolitan areas

Suborganizations can participate in DGNB committees and task forces. They have access to the members' area on the DGNB website, receive member information, and can use their DGNB membership for advertising purposes (use of DGNB logo– see DGNB press guidelines). In addition, they receive member discounts on certifications, training courses, manuals, software, events, etc.

Suborganizations of metropolitan areas do not have any voting rights at the member assembly.